

## AIM POWR MOTOR



*Formula E Concept Mode  
with APM120 by Sergio Rinland*

### **Achieved further evolution from APM120, ultra high power and compact motor!!**

Aiming a target "Create a motor of the Power weight ratio like a F1 engine", **APM120** motor achieved the world top level performance of continuous output 75KW(100PS) with weight of **12kg**.

It drew great interest from automotive, aerospace and other fields since its announcement of 2013. And some application programs have been launched.

2years has passed, **APM120** has achieved further evolution and accordingly been the world's No.1 motor.

Creative design for the rotor and the stator of **APM120** has been evolved to **APM120R** achieving the continuous power 105KW(140PS) with 14kg weight.

**APM120R** realized level of the power weight ratio "**10PS/1kg**" beyond the F1 engines.

**APM120R** will be applied for not only automotive racing fields, such as Le Mans, Formula E, High-Speed Hillclimb etc. , but also for production cars of high-performance advanced EVs and hybrid sports cars. Potentially it will be deployed for high performance two-wheeled vehicles, pleasure boats and aircraft.

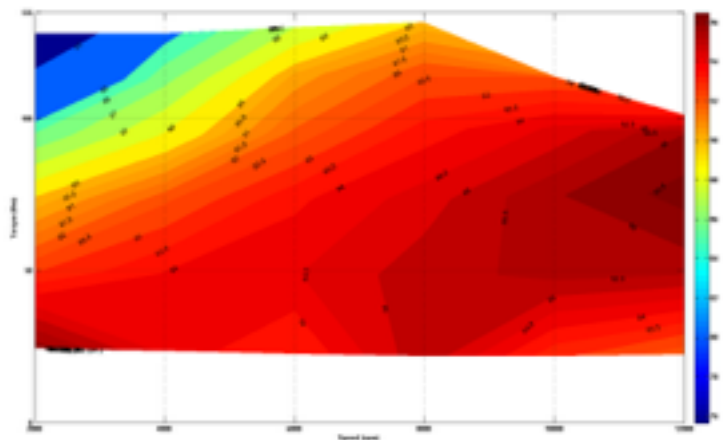
# Performance

AIM is capable to develop EV total system including batteries and control systems through its corroboration ability of Japan and UK and a full use of experience grown up via the development of **APM120** and **APM120R**.

## APM120/APM120R Specification

	APM120	APM120R
Max. Power	100KW(135PS)	125KW(170PS)
Max Torque	120Nm	130Nm
Continuous Power	75KW : 100PS	105KW : 140PS
Max. Efficiency	96%	96%
Max. Speed	12000rpm	12000rpm
Weight	12kg	14kg
Diameter	170mm	170mm
Length	145mm	170mm

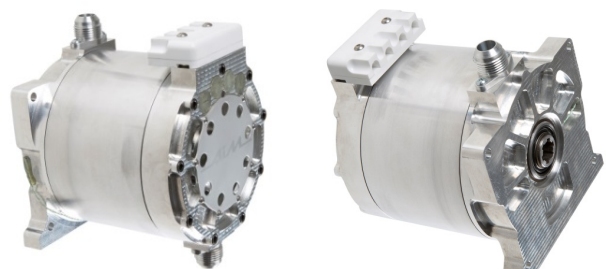
## APM120R Efficiency Graph (Motor only)



## APM120



## APM120R



AIM CO., LTD.  
 Nagoya Japan  
 Web <http://www.aim-info.co.jp/>  
 E-mail [info@aim-info.co.jp](mailto:info@aim-info.co.jp)

